

AirTune LED Troffer

TOPBAND The AirTune LED Troffer delivers soft, glare-free, ambient lighting in a popular center-basket design. The center-basket LED troffer is low-profile (2.60") design that offers a clean, versatile style and volumetric distribution. High efficacy LED light engines deliver energy savings and low maintenance compared to traditional sources. The slimmer profile of the luminaire coupled with energy-saving LED technology make it ideal choice for new construction.



PRODUCT FEATURES

Electrical

- Wide input voltage: 100-277VAC. Long-life LEDs, coupled with high-efficiency drivers, provide superior quality of illumination for extended service life.
- Excellent luminaire efficacy provides significant energy savings. General series troffer: 125lm/w
- To ensure trouble-free operation, protection is provided against output over-current, output over-voltage, short circuit. Power efficiency up to 88%.
- LED boards are easily accessible from below.

Optical

- Volumetric illumination is achieved by the center curved smooth diffuser, vertically and horizontally soft and comfortable, without dark space.
- The troffer can avoid light loss out of light leakage and mosquito entry by attaching the diffuser to the main panel closely.
- 0-10V dimming available. 80 CRI minimum source provides excellent color rendering.

Construction

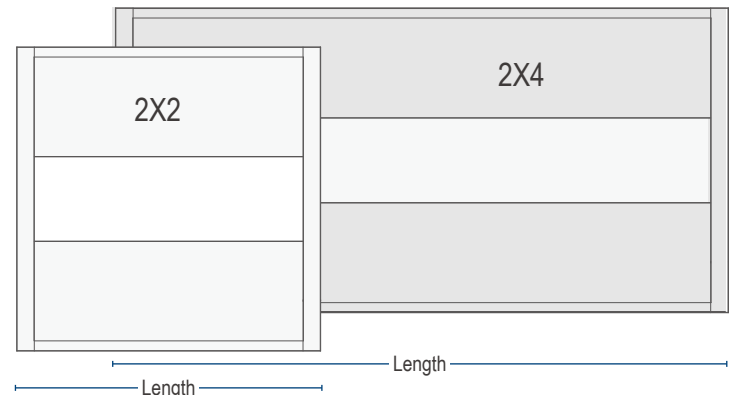
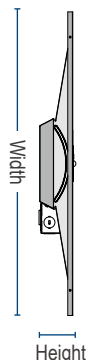
- Cold-rolled steel light body increases durability. Only 66mm (2.60") thickness.
- The reflector is finished with a high reflective matte white powder paint for improved aesthetic and increased light diffusion.
- Diffuser are extruded from impact modified polycarbonate, easy maintenance.
- IP20, suitable for indoor applications.
- Both the 2'x2' and the 2'x4' troffer are manufactured with quality components and finishes.
- Junction box is attached to the back of the driver.

Application

- The modern architectural style compliments any space, such as school, office, hospitality, education, bank, healthcare and more.
- Working temp:-20~40°C (-4~104°F). Storage temp:-30~60°C(-22~140°F).

DIMENSION

Dimensions	Length	Width	Height
2X2	603mm/23.74"	603mm/23.74"	66mm/2.59"
2X4	1213mm/47.75"	603mm/23.74"	66mm/2.59"



* All dimensions are inches (centimeters) unless otherwise indicated.

AirTune LED Troffer

To learn more about saving money and energy, Go to www.tp-led.com

PARAMETER

Ordering Information

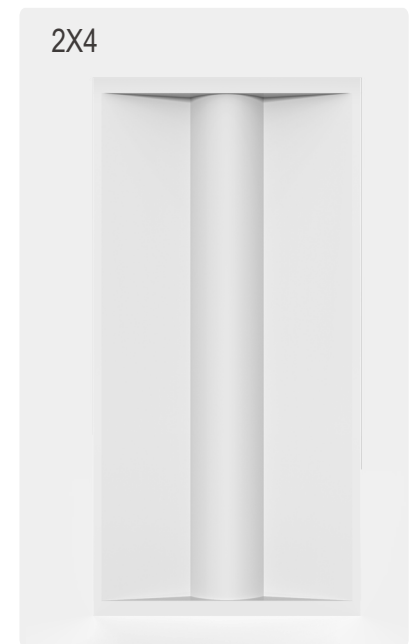
Example: **TPATPD22DLA-26WB**

TP	AT	PD	22	D	L	A	26W	B
Manufacturer	Products Series	Products Type	Length	Function	AC Input	Version	Product Wattage	LEDs
Topband	AirTune	Panel with direct lighting	22=2x2FT 24=2x4FT	D= Dimmable	100-277V	4 th Generation	26W, 32W 40W, 50W	SMD2835

Model No.	Power	Lumens	Efficacy	Dimensions	CCT
TPATPD22DLA-26WB	26W	3250lm	125LPW	2x2FT: 603*603*66mm	3500/4000/5000K
TPATPD22DLA-32WB	32W	4000lm	125LPW	2x2FT: 603*603*66mm	3500/4000/5000K
TPATPD22DLA-40WB	40W	5000lm	125LPW	2x2FT: 603*603*66mm	3500/4000/5000K
TPATPD24DLA-32WB	32W	4000lm	125LPW	2x4FT: 1213*603*66mm	3500/4000/5000K
TPATPD24DLA-40WB	40W	5000lm	125LPW	2x4FT: 1213*603*66mm	3500/4000/5000K
TPATPD24DLA-50WB	50W	6250lm	125LPW	2x4FT: 1213*603*66mm	3500/4000/5000K

Beam Angle: 120°
Dimmable: Optional (0-10V)
Output voltage: 36V
Power efficiency: 88%
Power Factor: >0.9
CRI: >80
THD: <20%
Cover: Frosted

DETAILS



AirTune LED Troffer

To learn more about saving money and energy, Go to www.tp-led.com

ENERGY SAVING SOLUTION

Estimated lighting costs using a standard 3 lamp T8 troffer

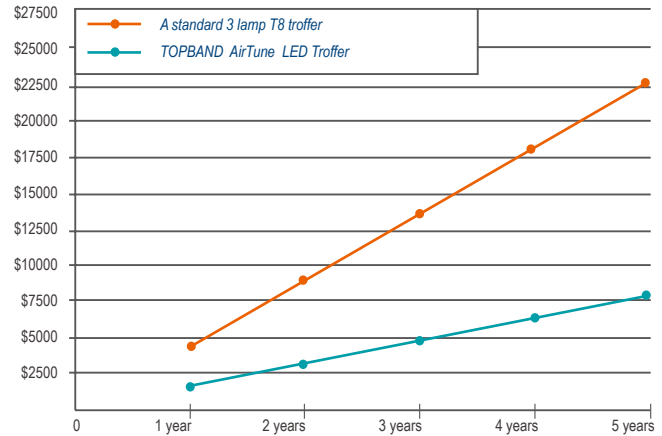
Present wattage	85 W
× Annual operating hours	4,380 hrs
	= 372,300 Watt-Hours
÷ 1,000	= 372.3 kWh per year
× kWh rate of \$0.10	= \$37.23 per year
× 125 fixtures	\$4,653.75 annual energy cost per space

Estimated lighting costs using a TOPBAND AirTune LED Troffer

Present wattage	40 W
× Annual operating hours	4,380 hrs
	= 175,200 Watt-Hours
÷ 1,000	= 175.2 kWh per year
× kWh rate of \$0.10	= \$17.52 per year
× 125 fixtures	\$2,190.5 annual energy cost per space

Total estimated annual savings \$2,463.25

Based on 125 fixtures per space operating 4,380 hours a year. 125 fixtures is roughly equivalent to a 10,000 square foot space. kWh rates will vary.



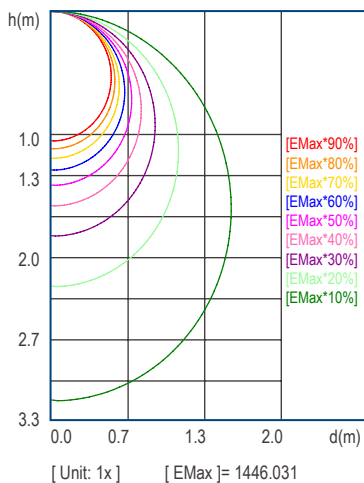
Savings calculations are based on energy costs using \$0.1 per kWh and 12 hours of daily operation.

PHOTOMETRY

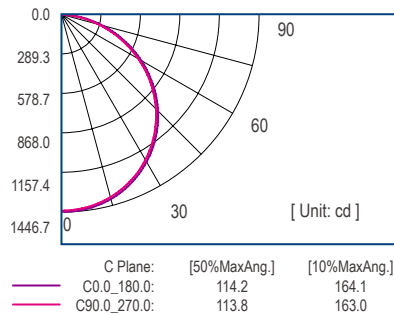
TPATPD22DLA-40W-2835LEDMLS-5000 nominal delivered lumens

Catalog No. TPATPD22DLA-40WB Manufacture: TOPBAND S/MH: C0_a180=1.272 C90_270=1.265 Lamp Type: LED Rated Voltage: 120V	Coefficients of Utilization Coefficients of Utilization - Zonal Cavity Method Effective Floor Cavity Reflectance RFC=0.20 Coef. RhoCC(%) 80 70 50 30 10 0 RhoW(%) 70 50 30 10 70 50 30 10 50 30 10 50 30 10 50 30 10 0 RCR Coefficient of Utilization(%) 0 118 118 118 118 115 115 115 115 110 110 110 104 104 104 99 99 99 97 1 108 103 99 95 105 100 96 93 96 92 89 91 89 86 87 85 83 87 2 98 90 83 77 95 87 81 76 83 78 73 80 75 71 76 73 69 67 3 89 78 70 64 86 77 69 63 73 67 61 70 65 60 67 63 59 56 4 72 69 61 43 79 68 60 53 65 58 52 62 56 51 60 55 50 48 5 75 62 53 54 73 61 52 46 58 51 45 56 49 44 54 48 43 41 6 69 56 47 46 67 55 46 40 52 45 39 51 44 39 49 43 38 36 7 64 50 42 40 62 49 41 35 48 40 35 46 39 34 44 38 34 32 8 60 46 37 32 58 45 37 31 44 36 31 42 35 31 41 35 30 28 9 56 42 34 28 54 41 34 28 40 33 28 39 32 28 38 32 27 25 10 52 39 31 26 51 38 31 26 37 30 25 36 30 25 35 29 25 23															
	Photometric values based on test performed in compliance with LM-79.															

C0 Space ISO Illuminance Curve



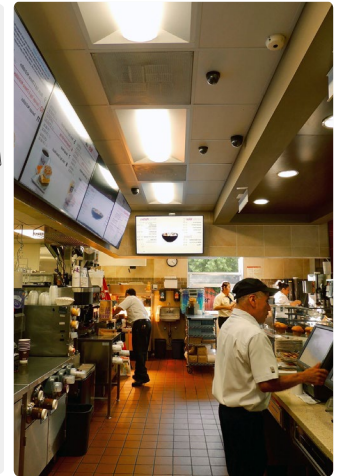
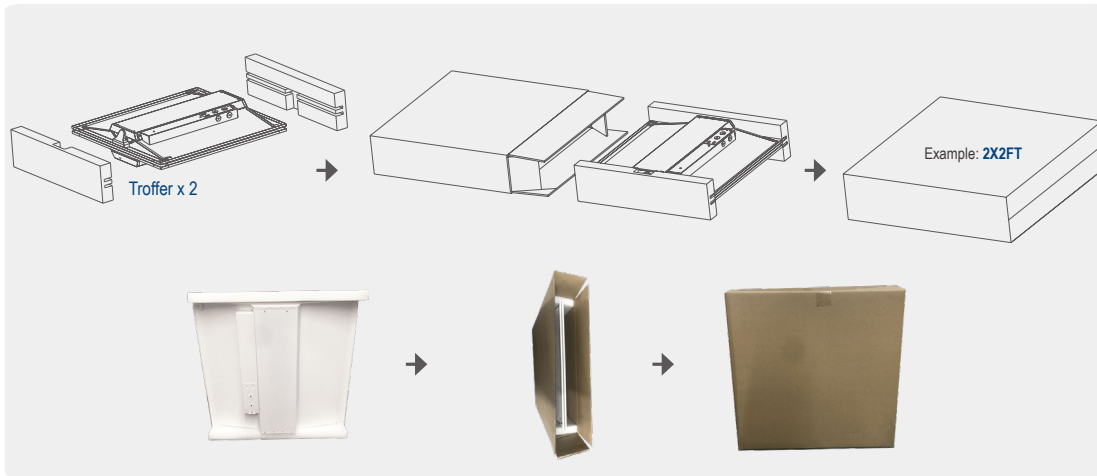
C Plane Distribution Diagram



AirTune LED Troffer

To learn more about saving money and energy, Go to www.tp-led.com

SCHEMATIC DIAGRAM OF PACKAGING



Size	Product Dimension	Carton Dimension	N.W. / Product	G.W. / Carton	Pcs / Carton
2X2 FT	603x603x66mm(23.74*23.74*2.59")	645x625x145mm(27.36*24.6*3.74")	3.07kg(6.76lb)	7.46kg(16.44lb)	2 pcs, 2 storeys
2X4 FT	1213x603x66mm(47.75*23.74*2.59")	1255x625x145mm(51.29*24.6*3.74")	5.59kg(12.32lb)	12.99kg(28.63lb)	2 pcs, 2 storeys

TOPBAND

CO-INNOVATING A SMARTER FUTURE

Stock code: SZ002139

FOR LIGHT EFFICIENT DESIGN PRODUCT INFO CALL

TEL. +86-755 2765 1503 • Email. sales@tp-led.com •

SHENZHEN TOPBAND CO.,LTD.

Add: Topband Industrial Park, Bao'an District, Shenzhen, Guangdong, China

Go to www.tp-led.com

To learn more about saving money and energy.

